

Quick Cal's

GUNSLINGER

COWBOY FAST DRAW TIMING SYSTEM

The Official Timer of the Cowboy Fast Draw Association

Cowboy Fast Draw Association

P.O. Box 5 – Fernley, NV 89408

(775)575-1802

Website: www.cowboyfastdraw.com

PRICE LIST & INFORMATION

The Gunslinger Cowboy Fast Draw Timer was developed to provide the sport of Cowboy Fast Draw with a continuous and stable supply of timing equipment. The entire system was personally designed by Quick Cal the Director of CFDA. It's designed to be affordable, simple, and to provide many years of trouble free service.

The modular system is designed to provide a wide range of service, from a state-of-the-art practice lane that simulates contest conditions, to expanding the amount of lanes necessary to run any size Cowboy Fast Draw tournament imaginable.

All timers feature a practice mode, a contest mode and a variable random start sequence that is impossible to second guess between 2 and 5 seconds. The display on the face of the timer is legible from beyond 15', especially for indoor applications. Timers can be located to be read easily from the firing line, while having the option to extend the Controller Button to whatever location is desired.



LED Start Light

Our LED Start Light is specially designed for Gunslinger Timers and are highly visible, even outdoors.

Audience Display Options

These displays have revolutionized the pleasure of watching and participating in contests. Many clubs are installing them in their ranges. The Audience Displays available are simply the best there is, with no delays or complicated wiring issues to deal with. There are two sizes that cover almost any application from private or club ranges to major contests.

PRICES ARE AS OF NOVEMBER 21ST, 2021 (Subject to Change Without Notice)



**See Package & Component Pricing
On Following Pages**

Available on the:

CFDA GENERAL STORE

www.CowboyFastDraw.com

Also Check Out our Mark IV Laser Targets & Lasers!

We Maintain the Lowest Prices Possible for Our Members (No Further Discounts Available)

(A-1) One Lane Package (Electronics Only) \$399 + \$22 S&H / Add CFDA Target A: \$589 / Targets B \$577 (+ UPS)

- 1 – Timer
- 1 – 3rd Generation LED (Amber) Start Light
- 1 - 50' Cat 5 Cable

(A-2) (Optional 5-Piece CFDA Targets in RED)

- 1 – Controller Button
- 1 – Target Sensor
- 1 – A/C Adapter

(B-1) Two Lane Package (Electronics Only) \$779 + \$32 S&H / Add CFDA Targets A: \$1,169 / Targets B: \$1,120 (+ UPS)

- 2 – Timers
- 2 – 3rd Generation LED (Amber) Start Lights
- 2 - 50' Cat 5 Cables
- 1 – Power Yx2 Splitter Cable, 1 – 6” Cat 5 Connector Cable, 1 – Match Elimination Cable

(B-2) (Optional 5-Piece CFDA Targets in RED)

- 1 – Controller Button
- 2 - Target Sensors
- 1 – A/C Adapter

(C-1) Four Lane Package (Electronics Only) \$1,489 + \$66 S&H / Add CFDA Targets A: \$2,239 / Targets B \$2,139 (+ UPS)

- 4 – Timers
- 4 – 3rd Generation LED (Amber) Start Lights
- 4 – 75' Cat 5 Cables
- 1 – Power Yx4 Splitter Cable, 3 – 6” Cat 5 Connector Cables, 2 – Match Elimination Cables

(C-2) (Optional 5-Piece CFDA Targets in RED)

- 1 – Controller Button
- 4 - Standard Sensors
- 1 – A/C Adapter

FREE: 6 Lane Timer Stand Included with 4 & 6 Lane Packages with Targets.

(D-1) Six Lane Package (Electronics Only) \$2,209 + \$84 S&H / Add CFDA Targets A: \$3,349 / Targets B \$3,259 (+ UPS)

- 6 – Timers
- 6 – 3rd Generation LED (Amber) Start Lights
- 6 – 75' Cat 5 Cables
- 2 – Power Yx2 Splitter Cables, 1 Power Yx4 Splitter Cable, 5 – 6” Cat 5 Connector Cables, and 3 – Match Elimination Cables

(D-2) (Optional 5-Piece CFDA Targets in RED)

- 1 – Controller Button
- 6 - Standard Sensors
- 1 – A/C Adapter

FREE: 6 Lane Timer Stand Included with 4 & 6 Lane Packages with Targets.

Note: For above packages please add \$5.00 per Cat 5 Timer to Target Cables to upgrade to next size up.

TARGET SIZE OPTIONS
 Target A - CFDA Standard 24” Plate
 Target B – CFDA (New) 17-3/16” Plate



Gunslinger Audience Display \$259.00 (Individual Price for Display Only)

The Gunslinger Audience displays have been a hit on championship and club ranges alike. They are also great for Town Folk Alleys! They give instant times as they are being shot. Whatever the timer shows is shown on the displays in real time.

Standard (5”x10”)

The Big “D” (7”x15”)

One-Lane Package \$299
 1-Display, 1-1amp A/C Adapter, 1-75' Cat 5 (Black)

\$399

Two-Lane Package \$595
 2-Displays, 1-1amp A/C Adapter, 1-Power Yx2, 1-Power 6' Extension, 2-75' Cat 5 Black

\$795

Four-Lane Package \$1,165
 4-Displays, 1-2amp A/C Adapter, 1-4 Lane Wiring Harness, 4-75' Cat 5 Black

\$1,565

Six-Lane Package \$1,739
 6-Displays, 1-4amp A/C Adapter, 2-3 Lane Wiring Harnesses, 1-Power Yx2, 6-75' Cat 5 Black

\$2,339

Package Prices Include:
 Power Supplies and all Cabling.
Don't Need the Cat 5 Cables?
 Deduct \$10 for each Cat 5 Cable, not needed.



Updated Audience Display (Shown with Optional Components)

Pictured here is our updated unit, now constructed in a water resistant metal casing and then mounted into a wooden frame, for easy mounting options, with an overhang on the front to cut down on glare on a sunny day. Most of the components shown are needed and can vary depending of the type of range set-up. The color code for cabling is “Black”. They can be purchased separately or with the packages above.



The Big “D” Audience Display \$359

Since we invented our Gunslinger Audience Displays in 2010, we have had inquiries for the large units that we have used at FGA, but they were cost prohibitive with the technology that we had available, until now!

For just an additional \$100 per unit they are not only affordable, but can be seen for over 100’ away! (See the Comparison Photo)

Audience Display Wiring Harness - 3 Lane \$36 or 4 Lane \$48

Saves time and money, shown is the 4 Lane Package, the 3 Lane Harness is only the bundle of wires on the right side of this photo.



Special Note: *If you need a custom package other than what is shown here, or just to discuss these timers, please call the CFDA Office at 775-575-1802. If Quick Cal is not in, please leave a message and he’ll call you back.*

(U.S.) Shipping Costs *(We know that shipping costs have gone up and are a concern)*

Shipping will be calculated for USPS Priority Flat Rate Boxes when timing equipment only is ordered. When metal or laser targets are ordered they will be shipped UPS Only, our CFDA 5 Piece Targets have been designed to fit into as small of boxes as possible and to weigh as little as possible, to save on shipping costs.

We will combine orders to save shipping charges wherever possible. Our policy is to charge shipping + 10% to cover packaging materials and handling.

USPS Priority Shipping Costs *(Electronics Only “No Targets”)*

Package Shipping: 1 Timer - \$22; 2 Timers - \$32; 4 Timers - \$66; 6 Timers - \$84. Usually takes only 3 days to arrive almost anywhere in the U.S.

UPS

Our website shipping calculator calculates from our location to yours for CFDA Targets, usually takes 2 -3 to reach Western Regions, 4-6 to reach Mid-Western Regions, and 7 days to reach the East Coast.

International Shipping

International Shipping is handled on a case by case basis. **International customers will not be able to complete an order online** Please Email: info@cowboyfastdraw.com for a quote and to how set up the process for the order .

Delivery Schedule

It is our goal to ship all orders within 3 business days, it can take 2 to 7 days to reach your location. Most items on our General Store are stock items. But, occasionally we will be temporarily “out of stock”, it is our policy to contact our customers if any order can not be shipped within **7 business days** of the receipt of the order. We are open Monday - Thursday each week, except for holidays.

The CFDA 5 Piece Target A:\$219 (24”) (+S&H) B: \$207 (17-3/16”) (+S&H)

Target Assembly Instructions:

All orders with targets come with an Instruction Page in the box.

We even provide a Starter Kit Roller and your 1st tube of White Lithium Grease, because we want to get you shooting right away!



(Un-Packed)

(Assembled)

Target Components Ala-Cart (For Do-it-Yourselfers)



Base Stand \$46

The CFDA Base Stand is 18" wide and has 20" stabilizing legs. The center strut is off-set towards the rear of the legs to counter-balance the target when attached to the LED Shield. A 5/16" nut is provided on the back to allow a 5/16" bolt being tightened to stabilize the Square Pole (Lower).



Square Poles (Upper & Lower)

There are two square poles that extend from the stand upwards to hold the target assembly in place. They are now both the same length at 27”.

Lower Section \$32

Has a 5/16” threaded nut welded to it for securing the two sections together

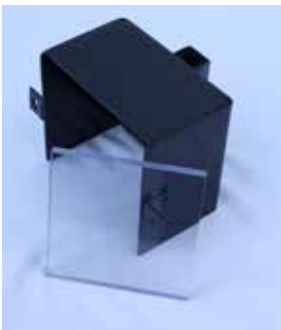
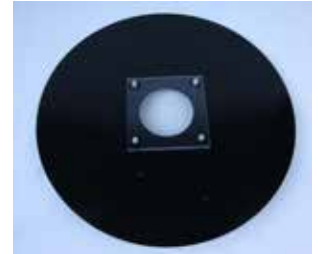
Upper Section \$28

Does not have a nut so that the target assembly can be slipped over it.

CFDA Standard Targets / With Polycarbonite Lens Installed

Has a 3.5” LED Start Light Hole in center, and pre-drilled for CFDA Sensors and the LED Start Light Shield. They are painted with glossy black paint.

- A. 24” (Regulation Distance 21’) \$80
- B. 17-3/16 (Regulation Distance 15’) \$69



LED Start Light Shield \$57

The LED Light Shield bolts onto either target with just two 1/4” bolts with lock-nuts. This makes it easy to interchange target sizes. It has a square tubing sleeve on the back with a 5/16” nut that slips over the Square Poles. This box is made so that the magnets on the back of the CFDA LED Start Light attaches and will stay firmly in place.

(Shown with Optional Polycarbonite Lens)

Polycarbonite Lens \$16

Lens is 5” x 5” x 3/8”. We’ve NEVER had one fracture or break, even after years of use!

LED Light Shield & Lens Combo \$69

For those making their own targets, buy both and save!

Note For Do it Yourselfers: Make your own stands for instance a 1/2” galvanized pipe will fit right inside the square tubing. We offer all components separately, making acquiring hard to make or find parts a lot easier.



Grease Stand Assembly \$84

Why do it the hard way? Just use CFDA Target Components. Just cut a 3/4” piece of plywood and screw to the holes in the Pole Cap and attach your grease pan to it.



Pole Cap \$17

This Pole Cap can be used to attach Audience Displays to Pole Extensions and Grease Trays to wood bases that are held with small screws through the base plate in the Pole Cap. Which slips right into Square Poles.



Three-Arm Knob \$6

Real handy for adjusting target height on the square pole, with no tools required.



5/16” x 3/4” Bolts \$1 (Set of Two)

These are used to tighten the pole and stand joints.



1/4” x 3/4” Bolts \$1 (Set of Two, with Lock Nuts)

These are used to attach the Target to the Light Shield.



Here's an Idea!

Bring your Audience Display in view, especially great for quick set-ups for “Try Cowboy Fast Draw” events!

Just use 3 Lower Sections (with 5/16” nuts), and a Pole Cap to attach your Audience Display to.



White Lithium Grease (Lucas Oil)

\$7 per Tube

It's the best and brightest white lithium grease we have found! It cleans up real easy. Comes in handy 8 oz. Tubes.

CFDA GUNSLINGER TIMING SYSTEM ACCESSORIES



Gunslinger Reaction Trainer

\$60

The Gunslinger Reaction

Trainer is a ground breaking training tool not only for the sport of Cowboy Fast Draw, but for any activity which requires the honing of reactions and conditioned reflexes. Tuning your mind to be in better sync with your body, promotes a younger and quicker thought process which enhances all kinds of activities. (Plugs into the Gunslinger Timer, completely replacing the Start Light & Sensor.) The Controller Button operates normally in either contest or practice mode.

Gunslinger Timer Total Start Toner Package \$129 (Includes New Model Button)

This is a great tool to train Announcer / Timer Operator to make sure that the Start Button is pushed when the Set Command is given. It emits a 1/4 second tone that has a volume control, can be heard in the vicinity of timing table. (Includes the Cables)



Total Start Toner Package Includes: Button Controller w/ Toner Jack; Toner Unit, Power Y-2 Splitter, and 3' Toner Cable. (Cables are required since the unit requires power & our Toner Cable connects the toner to the button.)

Note: All Button Controllers have come standard with the jack, since 2018.

Older Button Controllers will need to be replaced with the newer model to operate a Start Toner.

(Package does not come with cables attached as shown in Picture)



Start Toner Only Package Includes: \$75 - Start Toner Unit; Power Y-2 Splitter, and 3' Toner Cable. Requires a New Model Button with the Start Toner Jack as shown to the right.

To Purchased Components Separately (See Page 8)



New Model Button Controller with Toner Jack

MARK IV LASER TARGETS (8" & New 17-3/16")

CFDA's New Mark IV Laser is the result of testing since 2015, by Quick Cal. This is the 4th Generation and we feel the last. With near a 100% Reliability Factor, this can open up the possibility for Official CFDA Laser Matches!

The personal practice Mark IV Laser Target has a 8" translucent circle for the hit recording surface on the target. We are working on a 17-3/16" version, the Mark IV - 17, which we hope to have perfected later in 2020.

The control panel has been simplified and now has a sensitivity control and a selector switch that automatically added wax bullet travel time for both 15' and 21', or you can set it to "React" in order to work on your reactions using a six-gun with lasers and just squeezing the trigger upon seeing the Start Light.



READY TO GO



GO!



SHOT RECORDED



TWO LANES IN ACTION



BACK PANEL



TARGET ONLY



ONE LANE PACKAGE



TWO LANE PACKAGE
SEE OPTIONS

Mark IV - 8" Laser Target (Only)

\$389

For those who already own a CFDA Gunslinger Timer, which is required to operate the Laser Target. (Includes: Y-2 Splitter, Mini Screw Driver, Timer Holders, and Cat 5 Blue 2' Cable)

Timer & Mark IV - 8" Laser Target Package **\$669** (One Lane Practice Package)

Includes: Gunslinger Timer, Mark IV Laser Target, Controller Button, AC Adapter, Y-2 Power Splitter, 2-2' Cat 5 (Blue) Cables, Mini Screw Driver, and Timer Holder.

2 Lane Timer & Mark IV - 8" Target Package **\$1,299.00** (Timers Down Range)

Includes: 2-Gunslinger Timers, 2-Mark IV Laser Targets, Controller Button, 2 - AC Adapters, 2-Yx2 Power Splitters, 1- 6' Power Extension, 2 -2' Cat 5 (Blue) Cables, 2-15' Cat 5 (Red), 1-Cat 5 Connector (Red), 1-15' Match Elimination Cable, Mini Screw Driver, and 2-Target Top Timer Holder.

We have Two Options! Both Timers Down Range on Targets, that can be used in either Practice or Mode. Or, Timers in back of the Firing Line on a score table.

NOTE: All above packages, must be shipping UPS, shipping will be calculated for each order. For those wishing to order 4 and 6 Lane Packages, please contact the CFDA Office.

Shown With Optional Tri-Pod **\$39**

The bottom panel has a 1/4"x20 threaded insert that is the standard for camera and camcorder tri-pods. We do stock Polaroid Tri-Pods, for your convenience.

(Please See Page 8.)

6.



STATEMENT: CFDA is committed to keeping the degree of difficulty of hitting our targets to its original specifications, which is a 24" Target at 21'. The 17-3/16" Target at 15' is proportional to those specifications.

THE KEY TO EFFECTIVE LASER TARGET PRACTICE IS KEEPING TARGETS AND DISTANCES PROPORTIONAL TO CHAMPIONSHIP SPECIFICATIONS AND RATIOS.

**IN THE CASE OF THE MARK IV - 8" LASER TARGET, THE PROPORTIONAL RATIO IS 1/3.
24" TARGET = 8"; 21' = 7'; 50" HEIGHT TO CENTER = 43" (SEE DESCRIPTION BELOW)**

Mark IV - 8" Laser Target Specifications & Ratios

Overall Dimensions

10.5" x 10.5" x 3-1/2" wood-framed housing, very adaptable to various mounting methods. Weight: 3.25 lbs.

Target

8" round target area on the front of the box is a white translucent lens, that simulates a CFDA Target with grease.

Proportional Distance

Since the Laser Target is 8", it is equivalent to 1/3 the size of a 24" CFDA Target. Therefore, it should be placed at 1/3 the distance of 21', which is 7', which is also proportional to 15' with a 17-3/16" Target.

Proportional Height

The average shooter fires their six-gun at 40" above the ground, whereas, the 24" CFDA Target is set to center 50" above the ground. The Laser Target should be set at 1/3 the amount of bullet rise, which in this case is 43-3/8", which is also proportional to a 17-3/16" Target at 15'. Each shooter can also calculate their own personal bullet rise and set the Laser Target to individual specifications.

Bullet Travel Time

Lasers move at the speed of light, but it takes approximately 3 hundredths (.030) of a second for a wax bullet loaded to CFDA specifications to travel 21', and .022 to travel 15. Our Mark IV Laser Targets do the math and display the correct time for the distance you are practicing for according to the selections you set.



Introducing Our New Mark IV - 17-3/16" Laser Target!

We Finally did it!!! This has been Quick Cal's goal since taking on the Laser Target project! No more ratio calculations, just set this Laser Target at 15' (47" high) and practice with low-cost Laser Cartridges.

Not only is this the perfect indoor practice, it is highly reliable. The initial pulse of the CFDA Laser Cartridge on the white surface of the target is required to record a time. Therefore a laser beam initiated off-target will not record a hit if swept onto the target.

When the Gunslinger Timer is inserted into the Timer Holder on top of the target, the times you record are highly visible from 15' away.

Just set the Timer Controller Button on Practice Mode and your Laser Target will run automatically.

Our Laser Target system is modular and completely expandable to up to 6 Lanes if desired. The timer(s) can be placed on the targets or on a score table, just like standard wax targets. Such a system can also be run with Audience Displays for club or competition applications.

CFDA's Laser Target Project has always had the goal of developing to the point where CFDA Affiliated Clubs could form and competitions could be held in locations where shooting wax ammunition could never before could have been imagined!



Mark IV - 17" Laser Target

Has the same basic controls as our Mark IV - 8" which features setting the target distance to calculate actual times that would be recorded by adding wax bullet travel time.

(See the Mark IV - 17" Manual for additional information)

Mark IV - 17" Laser Target (Only) \$669

For those who already own a CFDA Gunslinger Timer, which is required to operate the Laser Target.

(Includes: Y-2 Splitter, Mini Screw Driver, Timer Holders, and Cat 5 Blue 2' Cable)

Timer & Mark IV - 17" Laser Target Package \$949 (One Lane Practice Package)

Includes: Gunslinger Timer, Mark IV - 17" Laser Target, Controller Button, AC Adapter, Y-2 Power Splitter, 2-2' Cat 5 (Blue) Cables, Mini Screw Driver, and Timer Holder.

2 Lane Timer & Mark IV - 17" Target Package \$1,824 (Timers Down Range)

Includes: 2-Gunslinger Timers, 2-Mark IV Laser Targets, Controller Button, 2 - AC Adapters, 2-Yx2 Power Splitters, 1- 6' Power Extension, 2 -2' Cat 5 (Blue) Cables, 2-15' Cat 5 (Red), 1-Cat 5 Connector (Red), 1-15' Match Elimination Cable, Mini Screw Driver, and 2-Target Top Timer Holder.

(SEE Other Options, Including 4 Lane Club Ranges (Online at the CFDA General Store!)

Mark IV - 17" Laser Target Stand Options

You can place any of our targets on tables or other platforms, but we also have two options for specially made self supporting stands that are both adjustable in height.

#1. Lightweight Indoor Stand - This stand is made with light materials for easy and economical shipping. It works well especially for indoor location with level floors.



#2. Standard Target Stand - This is the same heavy duty stand that we use on our wax targets, but with a special Pole Cap that is made to screw to the bottom of the Mark IV - 17. It is recommended for outdoor usage or uneven surfaces, or ~~Standard Target Stand \$89~~ applications.



Lightweight Indoor Stand \$69

Other New Stuff!

Wax Target Sensor - Magnetic Version \$39

We have just produced a Magnetic Target Sensor that no longer requires screwing it to the back of the target. Just tick it on, we recommend right above the light shield, plug the 1/4" cord into the jack on the sensor and you're ready to go. We are using them as replacement sensors at the 2021 FGA.



Gunslinger Timer Box - \$189

Chisum's Wood Working Shop and our Tech Department has created a new Timer Box that holds up to 6 Lanes of Gunslinger Timers. It is the perfect solution to those of us who move timer locations for contests or Try Cowboy Fast Draw Events. The Cat 5 Cables and power supplies connect externally through ports on the back of the box.



Gunslinger Laser Cartridges 45lc & 38sp (No Adapter Needed) \$59

We have worked hard to re-develop our Mark IV Laser Target to accommodate less expensive red-dot lasers so that the pulse or continuous beams they generate are less likely to be able to be swept onto our Laser Target to record a hit. Making practice more meaningful.

We now deal directly with the manufacturer and offer CFDA Gunslinger Laser Cartridges, they are an economical Laser Cartridge that emits a continuous beam until the pressure is taken off of the primer switch. Colt actions must be re-cocked, or on Rugers just release the trigger (We suggest a 3 Cartridge Package, so that after each shot all you have to do is cock it once and you're ready for the next.)

We have just developed a new more powerful (3,000 Lumens) Laser Cartridge that is 50% more powerful! The new 3,000 Lumen Laser Cartridge was designed to acquire "maximum reliability" for our Mark IV Laser Target System.

We have also just modified our current stock of Laser Cartridges, so that they will fit into some Ruger Models (510, 511, 512, 513, 514, 515, 516, 517, 518, 519, 520, 521, 522, 523, 524, 525, 526, 527, 528, 529, 530, 531, 532, 533, 534, 535, 536, 537, 538, 539, 540, 541, 542, 543, 544, 545, 546, 547, 548, 549, 550, 551, 552, 553, 554, 555, 556, 557, 558, 559, 560, 561, 562, 563, 564, 565, 566, 567, 568, 569, 570, 571, 572, 573, 574, 575, 576, 577, 578, 579, 580, 581, 582, 583, 584, 585, 586, 587, 588, 589, 590, 591, 592, 593, 594, 595, 596, 597, 598, 599, 600) that seem to have shorter primer chambers.



\$59



Set of 3 - \$159



Set of 6 - \$294

Close-Out Special!

2,000 Lumens Laser Cartridges - \$49

Since we now have 3,000 Lumens Models, especially designed for our Mark IV Laser Targets. We are putting our remaining stock of 2,000 Lumens Model on Close-Out Special. While our Laser Targets will still work with them in most cases, we highly recommend this model for economical dry-fire practice.



Replacement Batteries - Pack of 10 \$8 - We do carry replacement batteries for our Gunslinger Laser Cartridges on the CFDA General Store for your convenience, they seem to last for a very long time. However even when a beam can be seen, low battery power can fail to operate the Mark IV Laser Target. (.45lc / 3-LR41) (.38/.357 / LR626 Batteries. But remember, if your Mark IV Laser Target is occasionally not recording hits, then it is likely time to change your laser batteries.

GUNSLINGER COWBOY FAST DRAW TIMER COMPONENTS & ACCESSORIES

Price List (As of November 20th,2021) *(Subject to Change Without Notice)*

GS-CFDT Timer	\$229
Button Controller (w/Toner Jack)	\$59 <i>(Required for 1 – 8 Timers)</i>
Start Toner Unit	\$75 <i>(Start Toner Button Needed to Operate Start toner Unit)</i>
Start Toner Cable 3'	\$12
Controller Red Extension Cat 5 Cables	(3'-\$8) (7'-\$10) (15'-\$15)
Cat 5 Connectors	\$8 <i>(Choice of Blue or Black)</i>
Cat 5 Cable (Red) 6 inch	\$7 <i>(Needed for each multiple timer)</i>
Match Elimination Cable 6 inch	\$8 <i>(Shot Winner Blinking Lights for Timer to Timer Connections)</i>
Match Elimination Cable 15' Feet	\$19 <i>(Shot Winner Blinking Lights for Mark IV Laser Targets)</i>
A/C Adapter (1 Amp)	\$23 <i>(One for every 6 Lanes)</i>
A/C Adapter (2 Amp)	\$26 <i>(Needed for 4 Lane Audience Displays)</i>
A/C Adapter (4 Amp)	\$29 <i>(For for 2 - 3 Lane Display Wiring Harnesses for 6 Lanes)</i>
3 Lane Audience Display Wiring Harness	\$39 <i>(Takes 2 for 6 Lanes)</i>
4 Lane Audience Display Wiring Harness	\$44 <i>(See Harness Packages that include Power Supplies, etc.)</i>
D/C Adapter	\$22 <i>(A12 Volt Motor Cycle Battery will run 4 Timers for days)</i>
Power Y x 2 Splitter Cables	\$9
Power Y x 4 Splitter Cables	\$16
Power Supply 6' Extension Cable	\$15
LED Light Array	\$79
CFDA Sensor	\$29
CFDA Sensor - Magnetic (NEW)	\$39
Piezo Transducer (Replacement)	\$9
Piezo Transducer w/ ¼" Jack Connected	\$16 <i>(For Quick Change, should always have some on hand.)</i>
Cat 5 Cables (Blue) (24"-\$8) (25' - \$14); (50' - \$19); (75' - \$24); and (100' - \$29 - Rarely Needed)	
4 or 6 Lane Timer Stand	\$25 <i>(Minor Assembly is Required)</i>
Timer Box - External Connections	\$189
Tri-Pod for Mark IV - 8' Laser Target	\$39
Mark IV - 17" Heavy Duty Stand	\$89
Mark IV - 17" Light Weight Stand	\$69



Cal Eilrich a.k.a. Quick Cal, Executive Director of CFDA, has been involved in shooting sports for over 50 years, starting in 1968 at age 15 with the sport of Fast Draw. He has had the honor of rising to the top levels in multiple shooting disciplines. Quick Cal's first love in shooting sports has always been related to Fast Draw and is a 17-Time World Fast Draw Champion.

As a Firearm Instructor he has instructed thousands of civilians and both Law Enforcement and Security personnel through classes and his videos. ***(Hit'em Fast Video is Recommended.)***

Here are some of Quick Cal's - Cowboy Fast Draw Practice Tips: Practice often at least 3 times a week to see good results; don't over-practice in any one session. If you fire more than 25 rounds per session, unless you are working on a specific detail, then you are probably over-practicing. Try to Dry-Fire everyday to train basic muscle memory, especially when starting out, you will make gains much faster. When practicing, make every shot count, take a small break between each five shots, make notes on what works. Find a way to track your misses, if you're missing in a particular area off-target, you're making headway; you just have to learn to make the necessary adjustments to hit the target.

WARNING! Safety First! Wax Bullets are not toys, they can cause serious damage. Handle with the same care you would use with live ammunition. Use outdoors or in a well-ventilated area with an exhaust fan, most primers contain some lead. Wear glasses as wax bullets do ricochet, always wear hearing protection while practicing. Consider Laser Cartridge Training!