



Quick Cal's

# GUNSLINGER

## COWBOY FAST DRAW TIMER

*The Official Timer of the Cowboy Fast Draw Association*

Cowboy Fast Draw Association

P.O. Box 5 – Fernley, NV 89408

(775)575-1802

Website: [www.cowboyfastdraw.com](http://www.cowboyfastdraw.com)



### PRICE LIST & INFORMATION



The Gunlinger Cowboy Fast Draw Timer was developed to provide the sport of Cowboy Fast Draw with a continuous and stable supply of timing equipment. The entire system was personally designed by Quick Cal the Director of CFDA. It's designed to be affordable, simple, and to provide many years of trouble free service.

The modular system is designed to provide a wide range of service, from a state-of-the-art practice lane that simulates contest conditions, to expanding the amount of lanes necessary to run any size Cowboy Fast Draw tournament imaginable.

All timers feature a practice mode, a contest mode and a variable random start sequence that is impossible to second guess between 2 and 5 seconds. The display on the face of the timer is legible from beyond 15', especially for indoor applications. Timers can

be located to be read easily from the firing line, while having the option to extend the Controller Button to whatever location is desired.

#### 3<sup>rd</sup> Generation LED Start Light

Our 3<sup>rd</sup> Generation LED Start Light is now standard on all of our timers.

#### Audience Display Options

These displays have revolutionized the pleasure of watching and participating in contests. Many clubs are installing them in their ranges. The Audience Displays available are simply the best there is, with no delays or complicated wiring issues to deal with. There are two sizes that cover almost any application from private or club ranges to major contests.

*Prices are as of August 21<sup>st</sup>, 2016*

*(Subject to Change Without Notice)*



See Package & Component Pricing

On Following Pages

Available on the:

**CFDA GENERAL STORE**

[Also Check Out our New Line of Lasers & Laser Targets!](#)

## Factory Direct Package Pricing (No Further Discounts Available)

- (A-1) One Lane Package (Electronics Only) \$374 + \$18 S&H /Add CFDA Target A: \$554 / Targets B \$544 (+ UPS)** **(A-2)**
- 1 – Timer
  - 1 – 3<sup>rd</sup> Generation LED (Amber) Start Light
  - 1 - 50' Cat 5 Cable
  - Optional CFDA 5 Piece Target (See Pricing Above)
  - 1 – Controller Button
  - 1 – Target Sensor
  - 1 – A/C Adapter

- (B-1) Two Lane Package (Electronics Only) \$729 + \$28 S&H /Add CFDA Targets A: \$1,079 / Targets B: \$1,059 (+ UPS)** **(B-2)**
- 2 – Timers
  - 2 – 3<sup>rd</sup> Generation LED (Amber) Start Lights
  - 2 - 50' Cat 5 Cables
  - 1 – Power Yx2 Splitter Cable, 1 – 6” Cat 5 Connector Cable, 1 – Match Elimination Cable
  - 1 – Controller Button
  - 2 - Target Sensors
  - 1 – A/C Adapter

- (C-1) Four Lane Package (Electronics Only) \$1,399 + \$56 S&H /Add CFDA Targets A: \$2,079 /Targets B \$2,039 (+ UPS)** **(C-2)**
- 4 – Timers
  - 4 – 3<sup>rd</sup> Generation LED (Amber) Start Lights
  - 4 – 75' Cat 5 Cables
  - 1 – Power Yx4 Splitter Cable, 3 – 6” Cat 5 Connector Cables, 2 – Match Elimination Cables
  - 1 – Controller Button
  - 4 - Standard Sensors **New: Free 6 Lane Timer Stand Included**
  - 1 – A/C Adapter **With Order With Targets**

- (D-1) Six Lane Package (Electronics Only) \$2,069 + \$84 S&H /Add CFDA Targets A: \$3,059 / Targets B \$2,999 (+ UPS)** **(D-2)**
- 6 – Timers
  - 6 – 3<sup>rd</sup> Generation LED (Amber) Start Lights
  - 6 – 75' Cat 5 Cables
  - 2 – Power Yx2 Splitter Cables, 1 Power Yx4 Splitter Cable, 5 – 6” Cat 5 Connector Cables,
  - 3 – Match Elimination Cables
  - 1 – Controller Button
  - 6 - Standard Sensors **New: Free 6 Lane Timer Stand Included**
  - 1 – A/C Adapter **With Order With Targets**

**TARGET SIZE OPTIONS**  
**Target A - CFDA Standard 24” Plate**  
**Target B – CFDA (New) 17-3/16” Plate**

**Note: For above packages please add \$5.00 per Cat 5 Timer to Target Cables to upgrade to next size up.**



### Gunslinger Audience Displays \$239.00 (Individual Price for Display Only)

The Gunslinger Audience displays have been a hit on championship and club ranges alike. They are also great for Town Folk Alleys! They give instant times as they are being shot. Whatever the timer shows is shown on the displays in real time.

**One-Lane Package \$279 \$269 (Without 1-75' Cat 5 Cable)**

1-Display, 1-A/C Adapter, 1-75' Cat 5 (Black)

**Two-Lane Package \$545 \$525 (Without 2-75' Cat 5 Cables)**

2-Displays, 1-A/C Adapter, 1-Power Y x 2, 1-Power 6' Extension, 2-75' Cat 5 Black

**Four-Lane Package \$1,070 \$1,030 (Without 4-75' Cat 5 Cables)**

4-Displays, 2-A/C Adapters, 2-Power Y x 2, 2-Power 6' Extension, 4-75' Cat 5 Black

**Six-Lane Package \$1,590 \$1,530 (Without 6-75' Cat 5 Cables)**

6-Displays, 2-A/C Adapter, 2-Power Y x 4, 4-Power 6' Extension, 6-75' Cat 5 Black



### Updated Audience Display (Shown with Optional Components)

Pictured here is our updated unit, now constructed in a water resistant metal casing and then mounted into a wooden frame, for easy mounting options, with an overhang on the front to cut down on glare on a sunny day. Most of the components shown are needed and can vary depending of the type of range set-up. The color code for cabling is “Black”. They can be purchased separately or with the packages above.

**Special Note: If you need a custom package other than what is shown here, or just to discuss these timers, please call the CFDA Office at 775-575-1802.**

## (U.S.) Shipping Costs

Shipping will be calculated for USPS Priority Flat Rate Boxes when timing equipment only is ordered. When targets are ordered they will be shipped UPS Only, the CFDA 5 Piece Target has been designed to fit in a 24" x 24" x 6", multiple targets require multiple boxes, since we have learned that packing 2 or more in a larger box brings the weight to over 70 lbs., which then get treated roughly and often would arrive damaged. We will combine orders to save shipping charges wherever possible. Our policy is to charge shipping + 10-15% to cover packaging materials and handling. International orders outside the U.S., please call for special shipping arrangements. **Note:** Most CFDA orders are shipped through USPS, except Target orders are shipped UPS.

## USPS Priority Shipping Costs (Electronics Only "No Targets", Includes Insurance)

1 Timer \$18  
Pairs \$28 each; e.i. 2 = \$28; 4 = \$56; 6 = \$84, etc.

## UPS

Our website shipping calculator calculates from our location to yours for CFDA Targets

## International Shipping

Handled on a case by case basis. Email [info@cowboyfastdraw.com](mailto:info@cowboyfastdraw.com) for quote. We will be glad to set up a secure file on a case by case basis for repeating international customers only with credit card information on file, since emailing credit card information is not secure. This must be done by phone or FAX.

## Delivery Schedule

Timers and components are a stock items, please allow two weeks to fill and ship large orders. We will contact the customer if any order can not be shipped within 14 days of receipt. Audience Displays may be built to order, please allow up to 3 – 4 weeks for delivery.

## The CFDA 5 Piece Target

**A: \$189.99 (24") (+S&H) B: \$179.99 (17-3/16") (+S&H)**

### Target Assembly Instructions:

1. Lay the base down and install the square bottom stand pole (It contains the threaded attached nut), then install the top stand pole.
2. Locate the 2- 5/16" bolts and insert them into the nuts welded on the base and on the top of the bottom stand pole. Then tighten the two bolts (no need to over tighten).
3. Most targets arrive without the light shield attached to the target, it just takes a few minutes to attach. The Lexan Lens comes pre-attached.
4. Locate the four holes in the target, two next to the lens to attach the light box to; and two more for the sensor. Using the 2 – 1/4" bolts with lock nuts, attach the light shield **so that the two sensor bolt holes are under the light shield**. Insert the 5/16" 3-Arm Knob into the nut on the back of the light shield.
5. Then slip the target with the light cover attached over the square tubing and hand tighten the 3-Arm Knob, adjust for appropriate height.
6. Next attach the Sensor to the back of the target using the two bolts and lock nuts provided. There are only two bolts that attach the sensor to the target, **use the diagonal holes on the sensor**.
7. Set Target to Regulation Height **(Target A) 24" @ 50" / (Target B) 17-3/16" @ 47"**

### **3. Base Stand**

**\$39.99**

The CFDA Base Stand is 18" wide and has 20" stabilizing legs. The center strut is off-set towards the rear of the legs to counter-balance the target when attached to the LED Shield. A 5/16" nut is provided on the back to allow a 5/16" bolt being tightened to stabilize the Square Pole (Lower).



**REAR VIEW**

< \$27.99

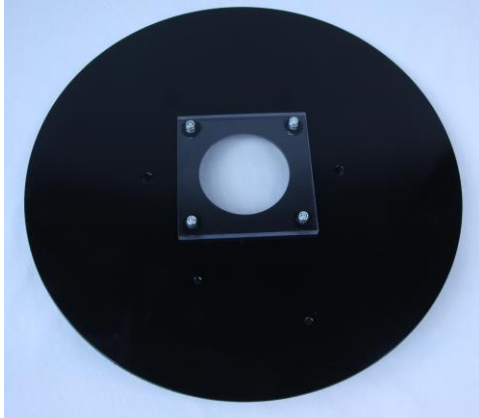
**4. Square Pole (Lower) with 5/16" Nut**

This is the lower pole that gets installed into the Stand Base. It has a sleeve that fits into the base, the bolt in the stand holds this section in place, and the bolt installed at the top of this section holds the next higher section in place. Square Poles work the best since cabling can be hidden behind them an either taped or zip tied in place.

\$24.99 >

**5. Square Pole (Upper) with No Nut**

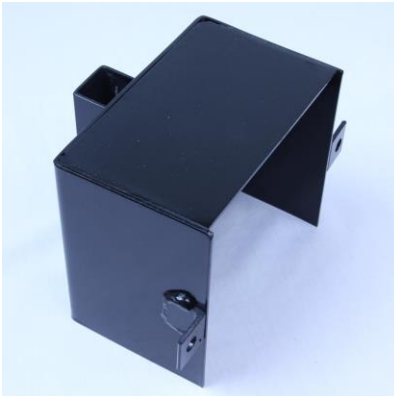
There is no bolt in this section so that the target LED Shield can slide over it from the top.



**6. Target Plate / With Lexan Lens Installed**

Has 3.5" LED Hole in Center, Pre-Drilled for CFDA Sensors

- |    |                        |         |
|----|------------------------|---------|
| A. | 24" (Standard)         | \$69.99 |
| B. | 17-3/16" (New in 2016) | \$59.99 |



**7. LED Start Light Shield**

\$49.99

The LED Shield bolts onto either size of target with just two 1/4" bolts with Lock Nuts. This makes it easy to interchange target sizes. It has an 1-1/4" x 1-1/4" Square Tube on the back so that height can be adjusted using a 5/16" bolt. The box is made of steel so that the magnets on the CFDA LED Start Light Shield will stay firmly in place.

**For Do It Yourselfers:** Make your own stands, for instance a 1/2" galvanized pipe will fit inside the square tubing. We offer all components separately, making acquiring the hard to make parts a lot easier.

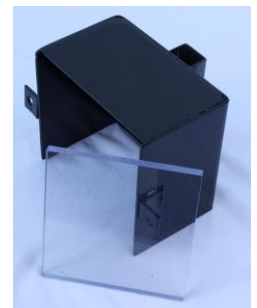


**8. Lexan Lens (Polycarbonate Plastic) 5" x 5" x 3/8" \$16.99**

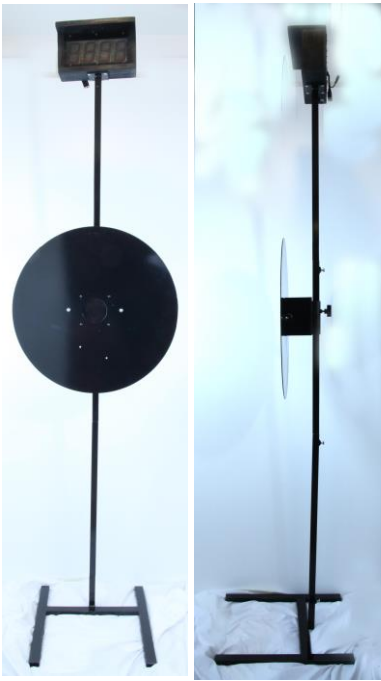
We have never had one break! Even after years of use.

**9. LED Shield/Lexan Lens Combo \$59.99**

Buy Both in a package and save a little more!







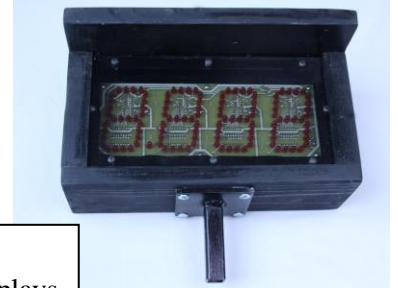
**Front View**

**Side View**

**Target Supported Audience Display (Great Idea!)**

**Components Sold Separately**

Ever set up a contest or Town Folk Alley in a location, and there was just no good place to attach your displays? **Here's the answer!** Just use 3 Square Pole Sections with Nuts for each Target/Display Combo, that way the bolts can be tightened to keep everything solid and straight. Then install a Pole Cap (v) on top, which can be attached to an Audience Display (v).



**10. Pole Cap \$14.99**

This Pole Cap can be used to attach Audience Displays to Pole Extensions and Grease Trays to wood bases that are held with small screws through to plate in this cap.



**11. Grease Stand \$74.99**

Why not simplify with modular components that are easy to assemble then disassemble for transport or storage! We recommend cutting a piece of 3/4" plywood a suitable size to hold the Grease Tray, then attach it through the 4 holes in the Pole Cap.

**Includes:** Base Stand, Square Pole (Lower), Pole Cap, and 2 - 5/16" Bolts.

**Does Not Include:** Grease Tray or Wood Grease Tray Base

**12. White Lithium Grease (Lucas Oil) \$7.99**

This is the best and whitest White Lithium Grease we have found! Comes in a handy 8 oz. Tube.

**\$69.99 per case of 12 (5.83 each)**

**Great for Clubs!**



**12. 5.99  
Three-Arm Knob**

Real handy for adjusting target height on the Square Pole, with no tools required.



**13. (Set of Two) \$1.00  
5/16" x 3/4" Bolts**

The bolts that are used to tighten the pole joints in the stand and between the poles.



**14. (Set of Two) \$1.00  
1/4" x 3/4 Bolts with Lock Nuts**

The bolts and nuts that are used to attach the LED Shield to the Target.

# CFDA LASERS, TARGETS & ACCESSORIES



**CFDA Laser Target**  
Shown with  
Optional Tripod  
(Not Included)

## 1. Gunslinger Timer Laser Target

**\$324.99**

**Finally!** A way to practice with your laser and being able to record an actual time to measure your progress. There are many brands of lasers on the market with different frequencies that will usually cause a reaction only on their brand of target. None of the existing brand of targets are relative to Cowboy Fast Draw. **ONLY OPERATES WITH A GUNSLINGER TIMER**

### Specifications

#### Overall Dimensions

11" x 11" x 6" wood-framed housing, which makes it very adaptable to various mounting methods. Weight: 6 lbs.

#### Target

8" round target area on the front of the box is a white prismatic lens, that simulates a CFDA Target with grease.

#### Receiver

The lens assembly contains a red filter that allows any red dot laser beam (when set in Universal Mode) to pass through and resonate with the receiver board mounted inside the housing.

#### Relative Distance

Since the Laser Target is 8", it is equivalent to 1/3 the size of a 24" CFDA Target. Therefore, it should be placed at 1/3 the distance of 21', which is 7', thus keeping it proportional.

#### Relative Height

The average shooter fires their six-gun at 40" above the ground, whereas, the 24" CFDA Target is set to center 50" above the ground. The Laser Target should be set at 1/3 the amount of bullet rise, which in this case is 43-3/8". Each shooter can also calculate their own personal bullet rise and set the Laser Target to individual specifications.

## 2. Gunslinger Timer & Laser Target Package (One Lane Practice Package)

**\$599.00**

**Includes:** Gunslinger Timer, Controller Button, AC Adapter, 25' Cat 5 (Blue) Cable, and Gunslinger Laser Target. (Lasers Not Included)

## 3. Two Lane Timer & Laser Target Package

**\$1,164.00**

**Includes:** 2 - Gunslinger Timers, 1 - Controller Button, 1 - AC Adapter, 2 -25' Cat 5 (Blue) Cables, 2 - Gunslinger Laser Targets, 1 - Yx2 Power Splitter, 1 - 6" Cat 5 Red, and 1 - Match Elimination Cable. (Lasers Not Included)



## 4. Optional Adjustable Tripod

**\$39.99**

The Gunslinger Laser Target has a standard 1/4 x 20 threaded insert on the bottom of the wood housing, that will accommodate any standard video/camera tripod stand.

We keep a supply of affordable compact tri-pods for the convenience of our customers. They are adjustable so that the Laser Target can be set to your personalized height using your individual statistics on the height that you fire your gun. Which should be 1/3 of the bullet rise which would be normally 43-3/8". See Manual.

Brands of our tri-pods will change from time to time.

## 5. Gunslinger Reaction Trainer

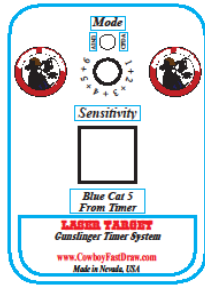
**\$59.99**

The Gunslinger Reaction Trainer is a ground breaking training tool not only for the sport of Cowboy Fast Draw, but for any activity which requires the honing of reactions and conditioned reflexes. Tuning your mind to be in better sync with your body, promotes a younger and quicker thought process which enhances all kinds of activities. **(Plugs into the Gunslinger Timer, completely replacing the Start Light & Sensor.)** The Controller Button operates normally in either contest or practice mode.





**DIMENSIONAL VIEW**



**CONTROL PANEL**

**Informational:**  
Bottom View of Laser Target wood-framed housing is a 1/4" x 20 thread, which is designed to accommodate standard Video/Camera Tripod Adapters.



**BOTTOM VIEW**

**Controls & Operation**

The control panel is located on the side of the wood-framed housing. The shooter simply connects the Blue Cat 5 Cable from the Gunslinger Timer to the Control Panel Port. This Laser Target requires no additional power supply. It completely replaces the normal CFDA Target LED Light and Sensor. There is an LED Start Signal that appears through the lens in the center of Laser Target.

**There are two Mode Settings:**

**#1. Universal Mode:** For all red dot lasers currently on the market that we know of.

**#2. CFDA Mode:** **For the CFDA/Surestrike Laser Only.** All known lasers emit beam lengths that while initially activated off the target, can be swept onto the target and still record a time. CFDA/Surestrike Lasers only allow the first 5/1000th second to record a time, which provide a much better simulation of actually hitting a regulation target, plus will allow the possibility of actual laser competitions to be conducted in the future.

**Sensitivity Knob**

There are many variables of lighting conditions, especially pulses emitted from florescent fixtures. After extensive testing we have developed a sensitivity feature that must be customized to the lighting of your room. Simply turn the Sensitivity Knob all the way counter-clockwise (Setting 1), activate the timer's start signal, then turn the sensitivity knob clockwise until a time is recorded. Then, back the knob off slightly (about 1/8"). You're are now ready to test for reliably. Note: that you may need to re-adjust sensitivity from time to time, since lighting conditions can change.

**Gunslinger Timer**

Just operate the timer normally in either contest or practice mode according to the Gunslinger Timer Manual.

**CFDA OFFERS SURESTRIKE LASERS**



**6. Standard Surestrike Laser Cartridge (9mm) \$109.99**

This very dependable Laser Cartridge emits a 5 hundredths of a second red beam pulse. The 9mm housing requires the 45 long colt Chamber Adapter to fit your .45 Six-Gun.

**7. (NEW) CFDA/Surestrike Laser Cartridge (9mm) \$154.99**

Same as above, BUT it has been custom programmed for CFDA. Even though it has the same 5 hundredths of a second red-dot pulse, but only the first 5 thousandths of a second is capable of registering a hit on the CFDA Laser Target. **Greatly reduces sweeping the laser pulse onto target.**

**Included:** 9mm Laser Cartridge, User Guide, and One Battery Pack.

**Not Included:** 45lc Revolver Chamber Adapter. *(Each) (Set of 3) (Set of 6)*

**8. (NEW) CFDA/Surestrike Laser Cartridge (Cap Only) \$74.99 \$209.99 \$399.99**

For everyone that already has a Standard Surestrike Laser that just wants to change the cap on the laser body to receive the CFDA programming, as mentioned in previous item.



**9. 45lc Chamber Adapter \$19.99**

This stainless steel high quality adapter converts the 9mm Laser Cartridge, so that it will fit into your 45lc chamber. (Fit both the Standard & CFDA Laser Cartridge.)

**Laser & 45lc Chamber Adapter Combo Sets:**

		<u>STANDARD</u>	<u>CFDA</u>
10. Set of 1		\$124.99	\$169.99
11. Set of 3		\$349.99	\$479.99
12. Set of 6		\$679.99	\$939.99



**Surestrike Battery Packs (3 Pack Shown)**

Each battery pack contains 3 actual batteries that are wrapped with insulation (blue or clear), that is required to prevent the batteries from contacting the inside of the battery casing.

**(3 Pack Shown)**

10. 1 Battery Pack	\$9.99	11. 3 - Pack - (As Shown)	\$19.99	12. 6 Battery Packs	\$29.99
--------------------	--------	---------------------------	---------	---------------------	---------

# GUNSLINGER COWBOY FAST DRAW TIMER

## COMPONENTS & ACCESSORIES

**Price List (As of August 21<sup>st</sup>, 2016)**

(Subject to Change Without Notice)

### Separate Timer Components

GS-CFDT Timer	\$209.99
Controller Thumb Switch	\$44.99 (Required for 1 – 8 Timers)
Controller Red Extension Cat 5 Cables	3' - \$7.99; 7' - \$9.99; 10' - \$10.99
Cat 5 Connectors	\$6.99 (Choice of Beige, Blue, Black, or Red)
Cat 5 Cable (Red) 6 inch	\$6.99 (Needed for each multiple timer)
Match Elimination Cable	\$9.99 (Needed for each pair of match timers, for blinking lights)
A/C Adapter (1 Amp)	\$22.99 (One for every 4 Lanes)
A/C Adapter (2 Amp)	\$24.99 (Needed for Multiple Displays)
D/C Adapter	\$21.99 (A12 Volt Motor Cycle Battery will run 4 Timers for days)
Power Y x 2 Splitter Cables	\$9.99
Power Y x 4 Splitter Cables	\$16.99
Power Supply 6' Extension Cable	\$16.99
Standard 2 <sup>nd</sup> Generation LED Light Array	\$54.99 ( <b>Limited Supply, When They're Gone. They're Gone</b> )
3 <sup>rd</sup> Generation LED Light Array	\$69.99 ( <b>STANDARD LED, VERY BRIGHT!</b> )
Sensor (Standard)	\$29.99
Piezo Transducer (Replacement)	\$9.99
Piezo Transducer w/ 1/4" Jack Connected	\$16.99 (Pre-soldered for quick changing, should always have some on hand.)
Micro-Switch Assembly (Heavy Duty)	\$64.99 (Pre-soldered for building your own balloon target stands)
Cat 5 Cable – 25 Feet	\$14.99
Cat 5 Cable – 50 Feet	\$19.99
Cat 5 Cable – 75 Feet	\$24.99 (Optional Upgrade to Any System for \$5 each Cable)
Cat 5 Cable – 100 Feet	\$29.99 (Rarely needed, usually only needed for far targets on 8 Lane Ranges)
Audience Display (Large) ( <b>Special Order</b> )	\$599.99 (For Use in Major Venues, can be seen from 300' in the sunlight!)
Audience Display	\$239.99 ( <b>STANDARD - Can be seen 150' in the sunlight</b> )
4 or 6 Lane Timer Stand	\$20.00 (Minor Assembly is Required)
6 Lane Carrying Case Combo	\$129.00 (Limited – Close Out!)

### CFDA Timer/Target Payment Plans Now Available!

*Only Available to CFDA Members or Affiliated Clubs for Timer, Target, Laser Packages Over \$500.*

**Terms:** Based Upon Total Purchase Price (Not Including Shipping)

**Payment #1 40% Due Upon Placement of Order + 100% of Shipping.**

**Payment #2 35% Due 30 Days After Initial Purchase Date.**

*(Note: Purchaser Has the Option to the Pay Balance at 30% calculation with Payment #2.)*

**Payment #3 35% Balance Due 60 Days After Initial Purchase Date.**

**CFDA Reserves the Right to Limit the Number of Payment Plans (Call for Details & Arrangements)**



**Quick Cal's Practice Tips:** Practice often at least 3 times a week to see good results; don't over-practice in any one session. If you fire more than 40 rounds per session, unless you are working on a specific detail, then you are probably over-practicing. Try to Dry-Fire everyday to train basic muscle memory, when starting out you will make gains much faster. When practicing, make every shot count, take a small break between each fire shots, make notes on what works. Find a way to track your misses, if you're missing in a particular area off-target, you're making headway; you just have to learn to make the necessary adjustments to hit the target.

**WARNING! Safety First!** Wax Bullets are not toys, they can cause serious damage. Handle with the same care you would use with live ammunition. Use outdoors or in a well ventilated area with an exhaust fan, most primers contain some lead. Wear glasses as wax bullets do ricochet, always wear hearing protection while practicing.

**CFDA Motto: Safety First, Fun Second and Competition Third!**

**Start a Cowboy Fast Draw Club!** If you have some family and friends that might want to join the fun, you can be the founder of a CFDA Affiliated Club! CFDA's Gunslinger Timers are a modular system that you can add to a build a large club that started right in your garage. **Call CFDA for Details**